



We Don't Supply Buildings
We Deliver Projects



INTERARCH BUILDING PRODUCTS PVT. LTD.

AN ISO 9001-2008 COMPANY

Central Marketing Office

B-30, Sector 57, NOIDA - 201 301, INDIA

Tel.: 0120 - 4170200/2581300/2581029, Fax : +91-120-2581017

E-mail: info@interarchbuildings.com | www.interarchbuildings.com

TRACDEK®, TRAC®, are registered trademarks of Interarch Building Products Pvt Ltd

INTERARCH LIGHT BUILDING SYSTEMS



IBPL/LGFS/GENERAL/6-14/V2

Introduction

Interarch Building Products Pvt. Ltd. commenced operations in 1984, and pioneered the high-end metal interior products market in India. Today, 32 years later, Interarch is proud to be the leading Turnkey Pre-Engineered Steel Construction Solution provider in India with integrated facilities for Design, Manufacture, Logistics, Supply and Project Execution capabilities for pre-engineered steel buildings.



The image shows the exterior of a large industrial building. The upper portion of the building features a bright blue corrugated metal roof. Below the roofline, the walls are made of white corrugated metal. On the left side, a vertical white panel displays the word "INTERARCH" in bold, dark blue, sans-serif capital letters. A thick blue horizontal line is positioned directly beneath the text. In the bottom right corner, there is a cluster of green, leafy plants. The overall scene is brightly lit, suggesting a clear day.

INTERARCH

Light Gauge Framing System

The Interarch Light Gauge Framing System is the ultimate union of design, materials, machinery and manufacturing of standard stud and track profiles which are produced automatically by combining software and machine control systems.

The software and machinery are specifically designed for high volume manufacturing operations. Interarch Light is ideal for applications where speed, reliability and flexibility are critical in delivering a project.

Every output profile is accurately formed, cut, punched, dimpled and individually labeled, ready to screw together for assembly.

Once at the site, they can be further assembled as per architectural drawings by simply snapping the wall frames and floor joists together and fixing them with self-tapping screws.

DESIGN PARAMETERS



Key features

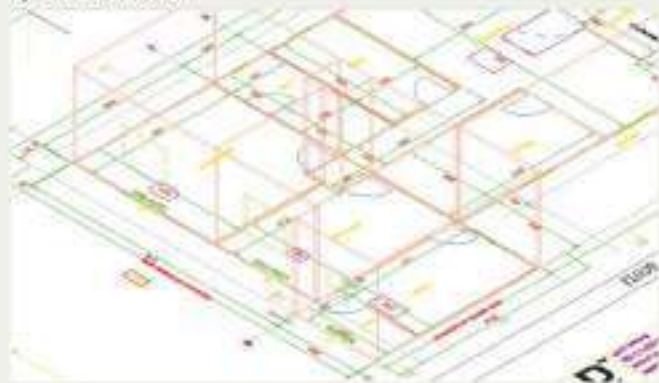
AS/NZS 4600-2005 (Cold-Formed Steel Structures)

BS 5950-5 - Structural use of steelwork in building Code of Practice for design of cold formed thin gauge sections

AISI-S100-2007 (North American Specification for the Design of Cold formed steel Structures member)

Substrate

a) Grade of Steel



1. Galvalume Steel - AZ 150/550 Mpa

2. Galvanized Steel - Z 275/550 Mpa

b) Section Size: 90 mm X 40 mm X 12 mm

c) Thickness : 0.75 mm / 0.95 mm / 1.25 mm

Fixing Screw :

Wafer head steel screws

Fixing arrangement :

Fixed to plinth beam by steel anchor fastener



LGFS FRAMING SYSTEM

Cold formed galvanized / galvalume steel framing wall panels, roof trusses and floor joists.



TYPES OF ROOFS

a) Sloping Roof



b) Flat Roof



c) Hip Roof

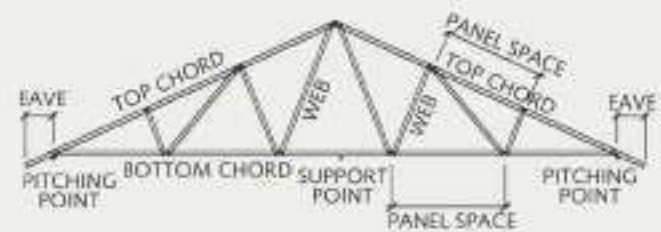


LGFS ROOF TRUSS SYSTEMS

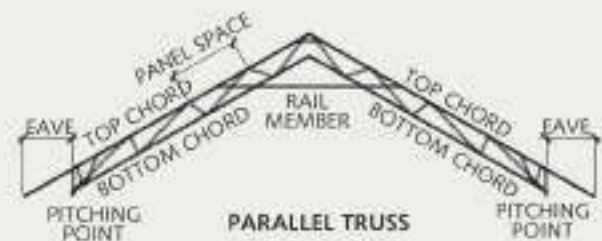
LGFS Roof Truss can be designed in various shapes / forms using Light Gauge Framing System as per required slope and design requirements.



TRUNCATED TRUSS



FULL TRUSS



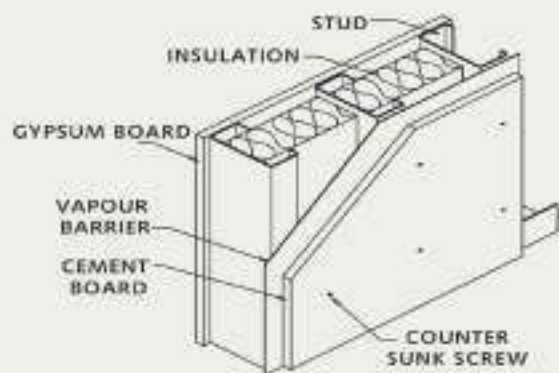
PARALLEL TRUSS

INSULATION SYSTEM (ROOF AND WALL)

Roof insulation should be fibre glass insulation 50mm thick, 16 Kg/cum with FSK facing.

Wall insulation should be Rockwool 50 mm thick, 48 Kg / cum density.





TYP. WALL FINISHING DETAIL

EXTERNAL FINISHES

- a) Cement board
- b) TRACDEK® HI-Rib®
metal profiled colour coated
galvalume sheet
- c) Glazing
- d) Wood Planks, Cement Planks
- e) Brick Tiles / Ceramic Tiles
- f) Rendering plaster over cement
board
- g) Aluminum Composite Panel



LOSS WALL DETAIL

1	Outside Finish	Weather Shield Paint
2	Outside Cladding	8mm / 10mm Cement Board or 9mm Heavy Duty Cement Board
3	Building Wrap	Building Wrap
4	Framing	Steel Stud – 90mm x 40mm Steel Stud
5	Insulation (Roof/Wall)	Glasswool as roof insulation Rockwool as wall insulation
6	Internal Lining	12.5 mm Gypsum/ 10mm Cement Board / 12 mm Laminated Board



Exposed Brick Cladding



Wall Tile and Cement Board



Aluminum Composite Panel



Aluminum Composite Panel



Cement Board and Siding



Cement Board with Groove Pattern



Stone Cladding



Cement Board and Siding

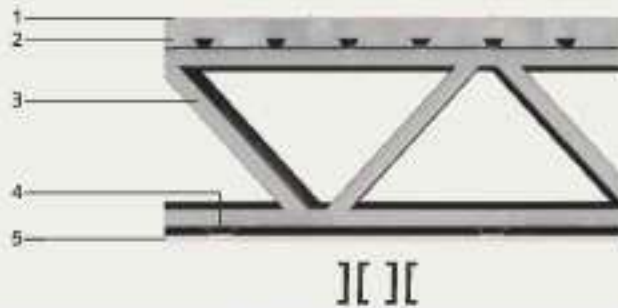
INTERNAL FINISHES

- a) Cement Board - 10mm thick with 2 coats of paint
- b) Gypsum wall Board - 12.5mm thick, with 2 coats of distemper painted and finished
- c) Wooden Paneling / Laminated board
- d) False Ceiling / Metal Ceiling - Gypsum board false ceiling painted or Pre Painted Steel / Aluminum ceiling



TYPES OF FLOOR (GROUND, GROUND + 1)

For multi-floor building up to Gr + 1 floor the first floor will be galvanized steel joist supported on the building wall frames. Decking Sheet suitable for 50mm Foam concrete floor or wooden floor (civil works scope) or 100 mm RCC



PRODUCTS

1	Floor Covering	Ceramic Tile / Wooden Floor
2	RCC / PCC Floor	80 / 100 mm on concrete in Steel over Metal Decking
3	Framing	Floor Joist – 250mm deep / Double C
4	Ceiling Substrate	25mm Steel Ceiling Battens
5	Ceiling Lining 1	12.5mm Gypsum

TYPES OF FLOOR SYSTEMS

a) Built-up Joists



b) LGFS Joists



SERVICES IN LGFS SYSTEMS

Electric and plumbing work is easy and safe without any need for drilling or punching.

Wash Basin Fixing



Electrical Outlets



Tap Fixing Arrangement



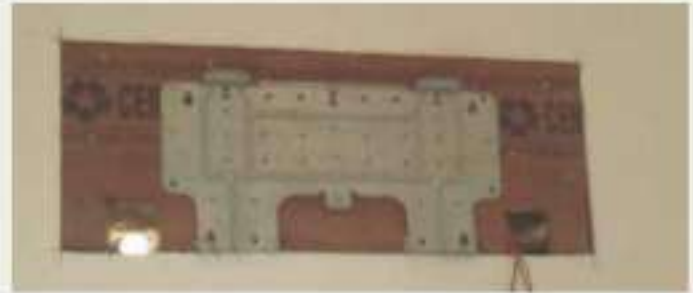
Arrangement



Frame Opening



Wall / Floor mount WC Fixing Arrangement



Wall AC Fixing Arrangement



Conduit / MCB Box Fixing Arrangement



Geyser Fixing Arrangement



Window Fixing Arrangement

Benefits

Interarch Light Gauge Framing Systems has got unmatched advantages over the conventional construction system. Few of them have been listed below for your reference:

- a) Steel structure (strength and durability)
- b) Can be customized to meet specific requirements i.e. shape, size and design
- c) Time saving in construction
- d) No pollution during construction
- e) Use of non-toxic green materials
- f) Insulation system reduces energy consumption and acts as sound barrier from outside
- g) Earthquake and wind resistant
- h) Termite proof
- i) Longer life span and easy to maintain
- j) Dismantling possibilities if required

HYBRID STRUCTURES

Combination of Built-up Primary Framing and Infill LGFS Framings.



Application of Light Gauge Steel Framing

1. ROOF TOP CONSTRUCTION FOR RESIDENTIAL & COMMERCIAL

This product is most suitable for roof top construction; due to its light weight it does not add any substantial load on the existing structure and is treated as a temporary structure.



2. RESIDENTIAL

LGFS system is ideal for farmhouses, villas, cottages and resorts.





3. PROJECT OFFICE BUILDING

Light Gauge Framing System due to its speed of construction, is ideal for site office building as it can be built before the commencement of the project.



4. LABOUR CAMP

Customized designs in accordance with the location and space availability are worked upon to meet the unique needs and requirements of our clients.



5. SCHOOL AND HEALTH CARE CENTERS

In remote locations and hilly areas it becomes difficult to carry out construction through conventional ways. This technology is most appropriate for these locations as only erection of the building is done at site.



6. CAFETERIA

Refreshing our clients with our approach to create cafeterias for their office campuses. These spaces are diligently designed and are at par with international quality standards, performance.



7. MEZZANINE FLOORS

Mezzanine floors are the most cost effective solution to utilize your building's space and it can be designed to support normal office traffic. Interarch can customize the mezzanine floors to meet your specific needs.



8. CLUB / RESORT

Our engineers ensure the luxury of hotels is complemented with safety and durability with their different approach which stems from their understanding of the project. All frames are light gauge steel structured, with green, energy-saving and quakeproof features. Compared to the traditional structures, the steel frame structure has its apparent advantages on architectural forms, structural integrity, combined economic advantages, and environmental consideration.



9. OFFICE BUILDINGS



10. SAMPLE FLATS



11. BANQUET HALLS



12. PARTITIONS IN LGFS



13. RETAIL SHOWROOM



Regional Offices & Manufacturing Units

Interarch Building Products offer turnkey operations with regional offices and project control centres for marketing, sales and coordination at all locations across India.

UNIT 1

M/s. Interarch Building Products Pvt. Ltd.

Plot No.: 14, Sector-2, Integrated Industrial Estate,
Pantnagar, Rudrapur - 263 153 (Uttarakhand)
Tel : +915944-250394, +919760690301 ,
+919997195421

UNIT 2

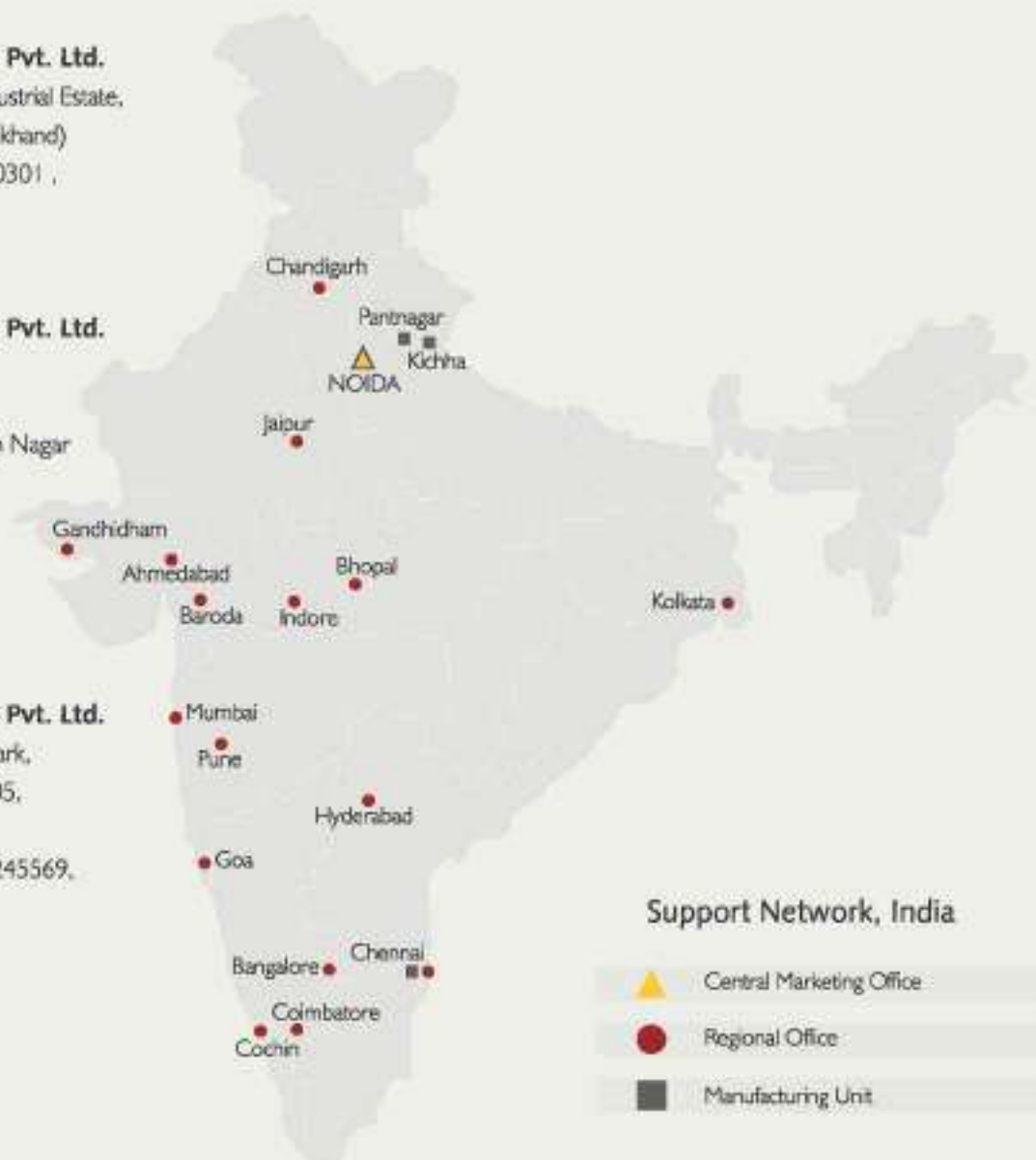
M/s. Interarch Building Products Pvt. Ltd.

Khasra No: 276-A,
2 KM on Kichha - Rudrapur Road,
Kichha - 263 148, Dist.: Udham Singh Nagar
(Uttarakhand)
Tel : +91-9760690306 ,
+91-08979310068,
+09760690306

UNIT 3

M/s. Interarch Building Products Pvt. Ltd.

Plot No.: D-1/1, SIPCOT Industrial Park,
Mambakkam, Sriperembudur - 602 105,
Kancheepuram (Tamil Nadu)
Tel.: +91-44-27190710 , +91-9840245569,
044 - 27190710



Support Network, India

-  Central Marketing Office
-  Regional Office
-  Manufacturing Unit

For faster processing of enquires from- Cochin , Bangalore , Chennai , Hyderabad, Goa , Mumbai , Pune , Bhopal, Indore, Ahmedabad , Baroda, Gandhidham , Kolkata , Jaipur & Chandigarh

Central Marketing Office:

B-30 , Sector-57 , Noida-201301
Tel : 0120 - 4170200 / 2581029 / 2586300
Fax : 0120 - 2581017 / 4170200
E-Mail: info@interarchbuildings.com
Website: www.interarchbuildings.com

